

## Phase 1

You decide to return until the first interview

You receive:

**CHF 1'000.–**

Couple: 1'500.–  
Family: 2'000.–

plus project

## Phase 2

You decide to return immediately after the decision

You receive:

**CHF 500.–**

Couple: 750.–  
Family: 1'000.–

plus project

## Phase 3

You decide and return afterwards

You receive:

**CHF 250.–**

Couple: 375.–  
Family: 500.–

- To get the assistance you need to present a valid travel document
- Persons from neighbouring states bordering the Schengen Area are excluded from any project assistance
- Persons from all states which are liberated of visa requirements for stays up to three months are excluded from any assistance (exception: vulnerable persons)


For free and confidential advice or information about your return contact your return counsellor at your Federal Asylum Centre.

[www.sem.admin.ch](http://www.sem.admin.ch)  
[switzerland.iom.int](http://switzerland.iom.int)  
[www.youproject.ch](http://www.youproject.ch)

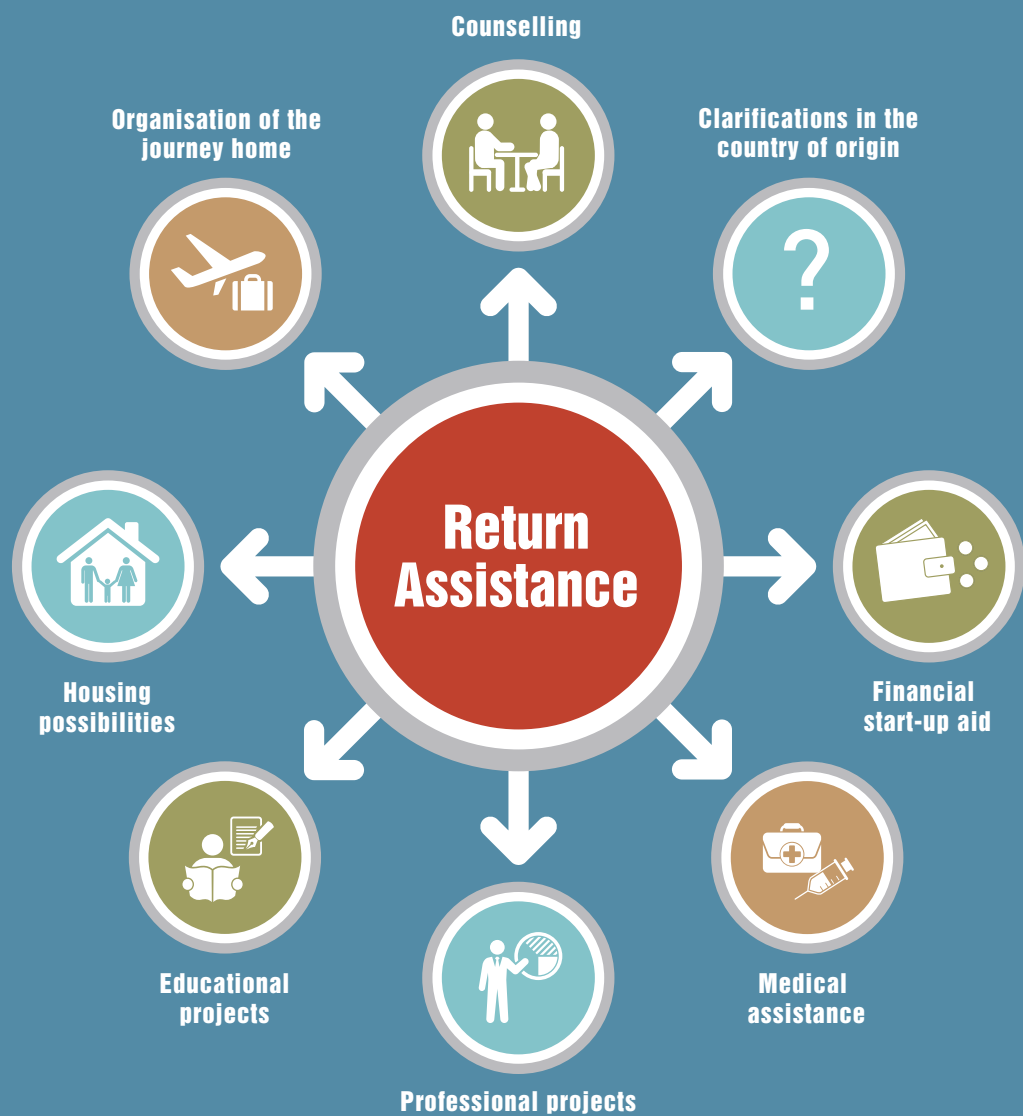


**Return Assistance:**  
**a change of perspective.**



 **Return Assistance**





### **What is return assistance?**

The return assistance supports you in returning to your country of origin. It facilitates your new start and improves the chances of a successful reintegration.

### **What is return counselling?**

The return counselling informs you non-binding and confidentially on the return assistance and has no influence on still

pending proceedings. The return counselling supports you in the preparation and organisation of your return.

### **Who can receive return assistance?**

The return assistance is open to all asylum seekers who want to return voluntarily to their countries of origin. Recognized refugees can also receive return assistance.

### **When and how?**

You can apply for return assistance both during and after the completion of the asylum proceedings.

### **Where is the return counselling?**

You can find your return counselling service at your Federal Asylum Centre.